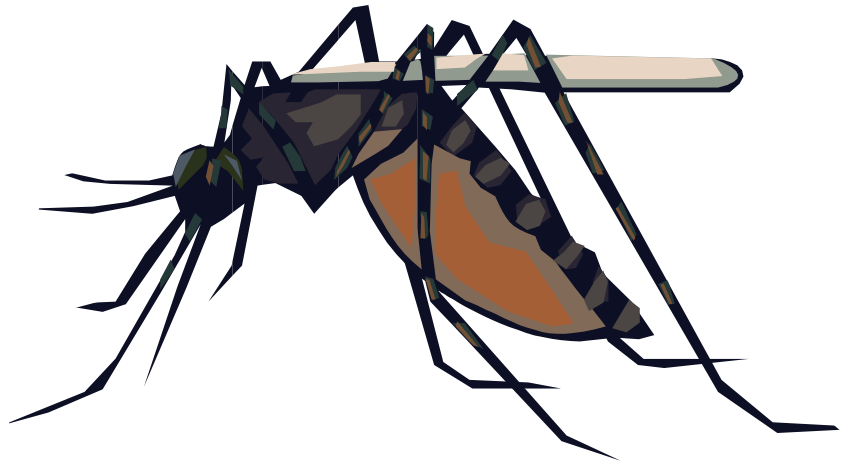


MOSQUITO FACT:
*A coffee can with an
inch of water can pro-
duce over a thousand
mosquitoes every
seven days.*



Mosquitos and the West Nile Virus

WEST NILE VIRUS — WHAT IS IT AND HOW CAN WE HELP PREVENT IT'S SPREAD??? The West Nile Virus is a mosquito-transmitted virus first identified in the West Nile District of Uganda in 1937. **HOW IS IT TRANSMITTED?** The West Nile is carried by birds, and is transmitted by mosquitoes. Birds are the primary host for the virus. Humans are an “end host” for the virus, i.e., humans do not transmit the disease to other humans except in a very rare circumstance, such as has been documented in an organ transplant. Horses are more susceptible to the West Nile Virus than are other livestock and pets.

- * You can reduce the number of mosquitoes in your area by:
- * Drain puddles or standing water, mosquitoes can breed in any standing water that lasts more than one week;
- * Ensure rain gutters are not clogged and can drain properly;
- * Change water and clean birdbaths weekly;
- * Empty wheelbarrows and plastic wading pools when not in use;
- * Encourage mosquito-eating animals to live near your home by providing bat or swallow houses. (A single bat can consume approximately 600 mosquitoes per hour.)

FOR MORE INFORMATION PLEASE FOLLOW THE LINKS AT:

www.cdc.gov